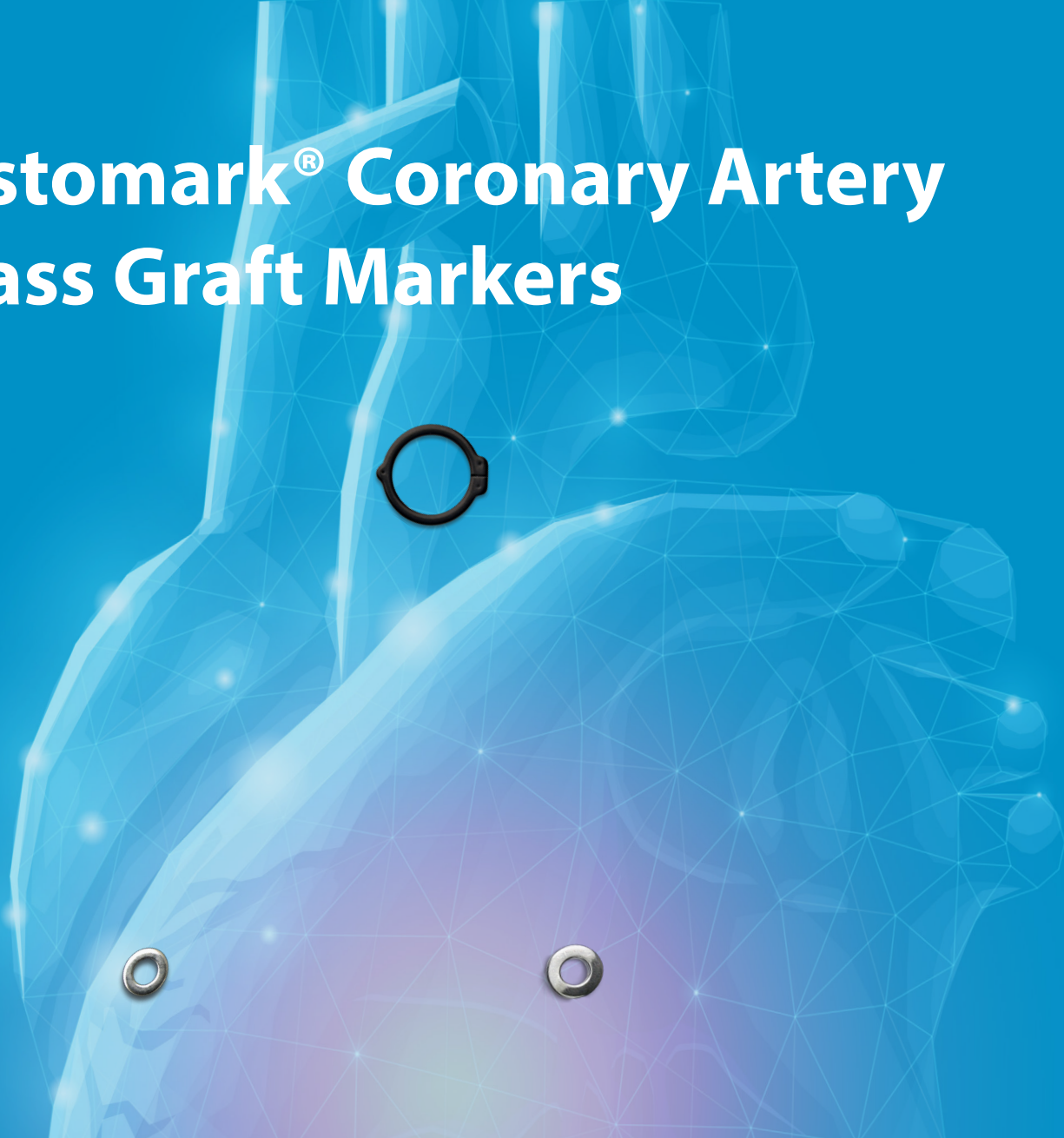


Anastomark[®] Coronary Artery Bypass Graft Markers



Leave a Mark for Post-operative Discovery



Genesee
BIOMEDICAL, INC.

Designed for Confident Visualization

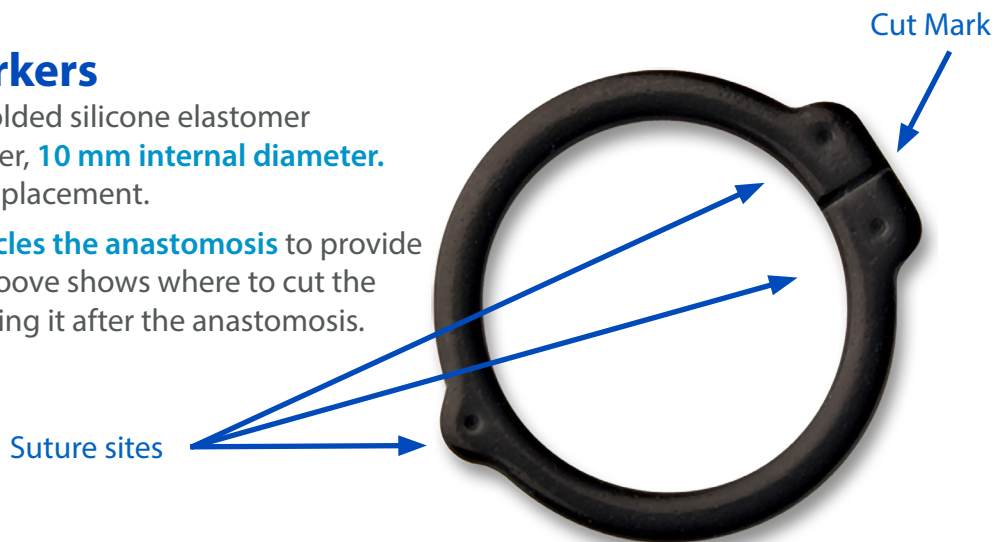
Radiopaque rings produce clear X-ray visualization of coronary bypass anastomosis sites

Flexible Proximal Markers

The flexible proximal marker is molded silicone elastomer impregnated with tungsten powder, **10 mm internal diameter**. Three depressions indicate suture placement.

The **circumferential marker encircles the anastomosis** to provide a “target” for the cardiologist. A groove shows where to cut the ring, giving you the option of placing it after the anastomosis.

(MR Conditional)

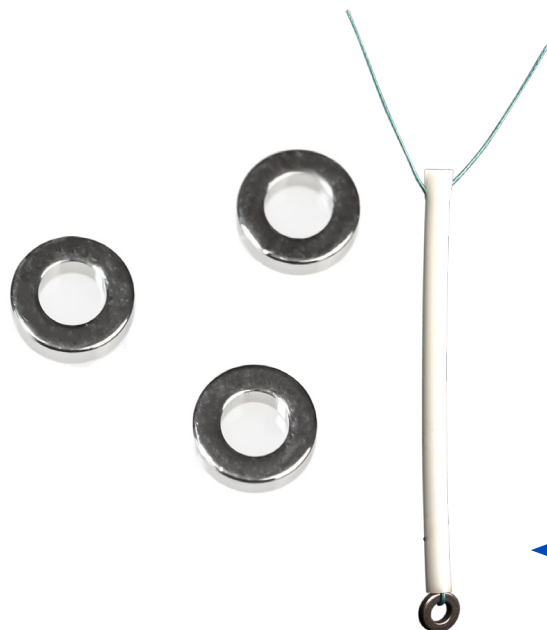


Stainless-Steel Distal Markers

The distal markers are implantable, surgical stainless steel, radiopaque markers. They serve as radiographic indicators to allow the cardiologist to visualize the sites of both distal and proximal anastomoses, so that graft anastomotic patency and the location of any coronary artery stenoses may be determined.

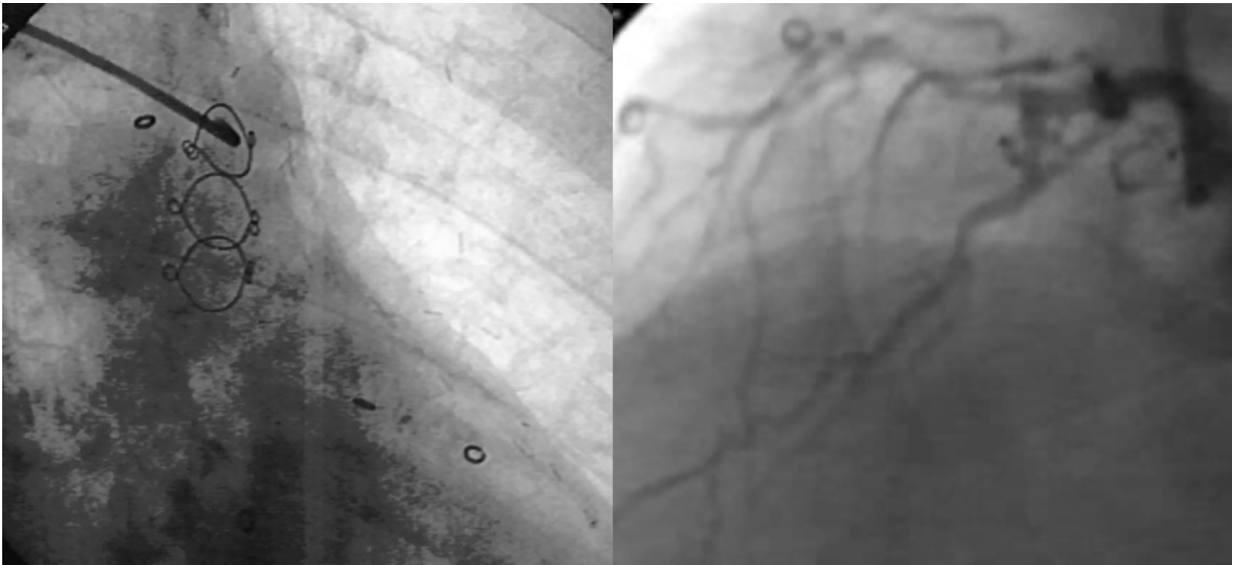
(MR Conditional)

The marker is a **smooth 316L stainless steel 3.5 mm diameter ring (2 mm internal diameter)**.



← **Optional holder for ease of handling**

“Bypass graft markers reduce contrast and radiation use in follow-up coronary angiography and reduce incidence of contrast-induced acute kidney injury.” ¹



Easily Identifiable

*Has your cardiologist ever had trouble finding a graft?
Have you ever been told your graft was occluded when it was not?*

The benefits are real²

- **Graft Markers reduce patient fluoroscopy time by over 30%**
- **Contrast media volume is reduced by over 21%**
- **17% reduction in number of angiographic catheters required**
- **Graft Markers improve successful location of anastomoses when restudying patients post-operatively**

Anastomark® Coronary Artery Bypass Graft Markers

Implantable Grade Stainless Steel Distal Markers

Tungsten Impregnated Silicone Proximal Markers

Quick and Easy Implantation Does Not Extend Operating Time

Easily Identifiable on Reoperation

“Radiopaque bypass graft markers improve detection of bypass grafts during subsequent coronary angiography and are associated with a lower radiation time and less consumption of contrast agent.”³

Ordering Information

Anastomark® Coronary Artery Bypass Graft Markers

| Catalog # | Product Description |
|-----------|--|
| FM-PM-1 | Flexible Proximal Silicone Marker 25/box (1/pouch) |
| FM-PM-2 | Flexible Proximal Silicone Marker 50/box (2/pouch) |
| FM-PM-3 | Flexible Proximal Silicone Marker 75/box (3/pouch) |
| AMGM-SD | Distal Stainless Steel Marker 25/box (1/pouch) |
| AMGM-D | Distal Stainless Steel Marker with Holder 25/Box (1/pouch) |
| AMGM-BD | Distal Non-Sterile Bulk Stainless Steel Markers (100/bag) |

1. Oman Z, Feghaly J, Gu L, Nasir A, Forsberg M. Utility of Radiopaque Bypass Graft Markers During Coronary Angiography Following Coronary Artery Bypass Graft Surgery. The Journal of invasive cardiology. 2020;32(6):232-234.
2. Catheterization and cardiovascular diagnosis [Cathet Cardiovasc Diagn] 1997 Mar; Vol. 40 (3), pp. 249-53; discussion 254.
3. Pingpoh C, Siepe M, Burger K, Zietak T, Valina C, Ferenc M, Beyersdorf F, Neumann F, Hochholzer W. Impact of proximal radiopaque coronary bypass graft markers on postbypass surgery coronary angiography. J Thorac Cardiovasc Surg 2018;155:15675-72

Anastomark® Coronary Artery Bypass Graft Markers

Indications: The markers are indicated for patients undergoing coronary artery bypass graft surgery or vascular graft surgery.

Contraindications: There are no known contraindications for use.

Precautions: Take care not to damage the marker rings during handling.

MRI Conditional information can be found online at <https://geneseebiomedical.com/project/graft-markers/>

CAUTION: Federal law (USA) restricts this device to sale by, or on the order of, a physician.



Genesee
BIOMEDICAL, INC.

Caution: Federal law (USA) restricts the sale, distribution, or use of this device to, by or on the order of a physician.

© 2023 Genesee BioMedical, Inc.

622006R00

All Rights Reserved.

www.geneseebiomedical.com

For Customer Service:
cservice@geneseebiomedical.com

Phone: 303-777-3000

Toll free: 800-786-4890

Fax: 303-777-8866

Genesee BioMedical, Inc.

700 W Mississippi Ave, Unit D-5 Denver, CO 80223