

# FlexForm™ Annuloplasty Ring & Band



**Genesee**  
BIOMEDICAL, INC.

Shaped by Surgeons.  
Built for Better Outcomes.

# FlexForm™ Annuloplasty Ring & Band

## Flexible Solutions for Mitral and Tricuspid Repair

### Designed For:

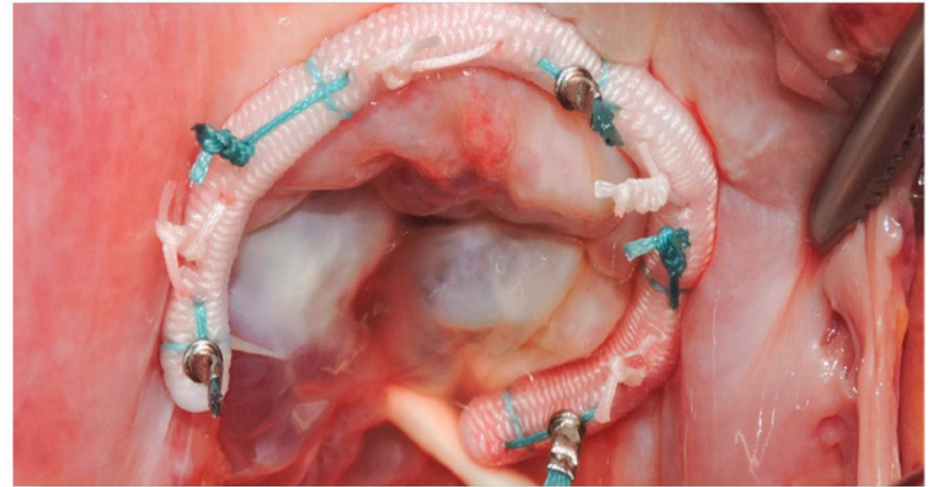
- ✓ Open, minimally invasive, and robotic procedures
- ✓ Surgeons prioritizing conformability and physiologic motion
- ✓ Mitral and tricuspid repairs with adaptable annular support

### Clinical Considerations

- ✓ Developed for open, robotic-assisted or port-access approaches
- ✓ Ideal for annuli requiring flexible adaptation without rigid support
- ✓ Suitable for mitral and tricuspid valve repairs

### Key Features:

- ✓ Fully flexible design supports native annular movement
- ✓ **Distinctive braided polyester** with a tube-in-tube design provides smooth, controlled needle penetration and minimizes the risk of crimping or snagging for efficient, reliable implantation.
- ✓ **Quick-release holder** with two visible cut marks for fast and easy removal
- ✓ **Seamless construction** offers a continuous suture zone with no circumferential seams, maximizing placement flexibility
- ✓ Available as both ring and band (models: FRH & FBH)
- ✓ Broad size range: 24–40 mm
- ✓ Large radiopaque marker ensures easy fluoroscopic identification



Stainless-Steel Handle



Stainless-Steel Sizer



## FlexForm™ Band – Ordering Reference

**Ordering Tip:** Order using model number FBH-##

Example: FBH-28 for a FlexForm™ Band, size 28 mm

Catalog #	Product	Description	Size
FBH-24	FlexForm™ Annuloplasty Band		24 mm
FBH-26	FlexForm™ Annuloplasty Band		26 mm
FBH-28	FlexForm™ Annuloplasty Band		28 mm
FBH-30	FlexForm™ Annuloplasty Band		30 mm
FBH-32	FlexForm™ Annuloplasty Band		32 mm
FBH-34	FlexForm™ Annuloplasty Band		34 mm
FBH-36	FlexForm™ Annuloplasty Band		36 mm
FBH-38	FlexForm™ Annuloplasty Band		38 mm
FBH-40	FlexForm™ Annuloplasty Band		40 mm

## FlexForm™ Accessories – SKU Reference

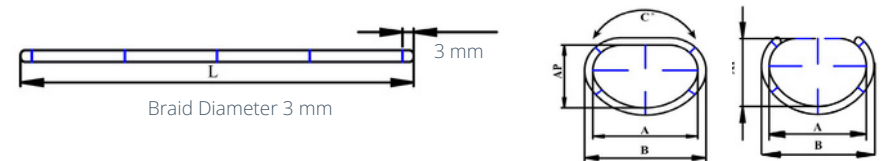
Catalog #	Accessory Description
FRBS	Set of Reusable Silicone Sizers
GSS-4	4 Stainless-Steel Sizers (26/28, 30/32, 34/36, and 38/40) with 2 GRH-U handles
GRH-U	Reusable Handle (standard length)
GRH-XL	Extra-Long Reusable Handle

## FlexForm™ Ring – Ordering Reference

**Ordering Tip:** Order using model number FRH-## Example: FRH-

30 for a FlexForm™ Ring, size 30 mm

Catalog #	Product	Description	Size
FRH-24	FlexForm™ Annuloplasty Ring		24 mm
FRH-26	FlexForm™ Annuloplasty Ring		26 mm
FRH-28	FlexForm™ Annuloplasty Ring		28 mm
FRH-30	FlexForm™ Annuloplasty Ring		30 mm
FRH-32	FlexForm™ Annuloplasty Ring		32 mm
FRH-34	FlexForm™ Annuloplasty Ring		34 mm
FRH-36	FlexForm™ Annuloplasty Ring		36 mm
FRH-38	FlexForm™ Annuloplasty Ring		38 mm
FRH-40	FlexForm™ Annuloplasty Ring		40 mm



**Indications:** The FlexForm™ Annuloplasty Rings and FlexForm™ Annuloplasty Bands are indicated for use in patients undergoing surgery of diseased or damaged mitral or tricuspid valves in whom the surgeon determines that the valve can be preserved by employing the appropriate surgical repair. The annuloplasty rings and bands provide support for the mitral or tricuspid annulus and restrict expansion of the annulus.

**Warnings:** Only surgeons who have received adequate training to determine whether incompetent, stenotic, or diseased heart valves are capable of being repaired or replaced should use this device. Refer to the Instructions for Use (IFU) for a full list of warnings, precautions and adverse events.

**CAUTION:** Federal law (USA) restricts this device to sale by, or on the order of, a physician.

Image Credits: Case photographs courtesy of Dr. Kevin Miller, Dr. Steven Bolling, and Dr. Jose Navia.



**FlexForm™ Annuloplasty Ring & Band by Genesee BioMedical | Flexible for M**

Genesee Biomedical



**Genesee**  
BIOMEDICAL, INC.

**FLEXFORM™ ANNULOPLASTY RING & BAND**

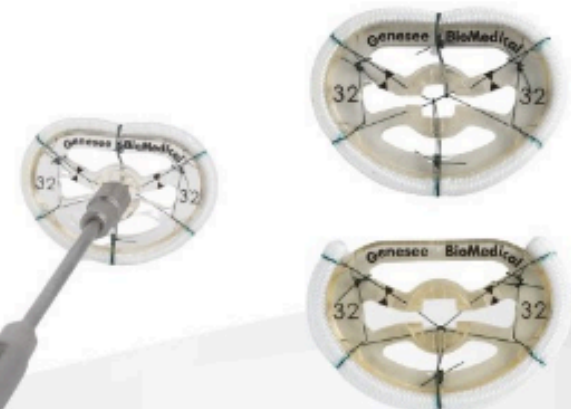
**FLEXIBLE SOLUTION FOR MITRAL AND TRICUSPID VALVE REPAIR**



SUBSCRIBE



Watch on YouTube





# Annuloplasty Accessories Quick Reference

Simplify. Standardize. Support.

## SKU Reference Table

Catalog #	Accessory Description	Compatible Products
FRBS	Set of 9 Flexible Silicone Sizers (Sizes 24–40)	FlexForm™, WellsForm™, TruForm™
GSC	Annuloplasty Scale	TransForm™, FlexForm™, WellsForm™, TruForm™
GSC-2	Set of 2 GSC Annuloplasty Scales and 2 handles (1 GRH and 1 GRH-U)	TransForm™, FlexForm™, WellsForm™, TruForm™
GSS-26/28	Stainless Steel Sizer, double-ended 26/28	FlexForm™, WellsForm™, TruForm™
GSS-30/32	Stainless Steel Sizer, double-ended 30/32	FlexForm™, WellsForm™, TruForm™
GSS-34/36	Stainless Steel Sizer, double-ended 34/36	FlexForm™, WellsForm™, TruForm™
GSS-38/40	Stainless Steel Sizer, double-ended 38/40	FlexForm™, WellsForm™, TruForm™
GSS-4	4 Stainless-Steel Sizers (26/28, 30/32, 34/36, and 38/40) with 2 GRH-U handles	FlexForm™, WellsForm™, TruForm™
GRH	Tricuspid Stainless Steel Sizers, double-ended	FlexForm™, WellsForm™
GRH-U	Reusable Handle	TransForm™, FlexForm™, WellsForm™, TruForm™
GRH-UXL	Extra-Long Handle (35 cm)	TransForm™, FlexForm™, WellsForm™, TruForm™
TFRS	Set of Reusable Silicone Sizers	TransForm™
TFSS	Set of Stainless-Steel Sizers (includes 1 GRH and 1 GRH-U)	TransForm™
WFBS	Flexible Silicone Sizers, set of 6, Sizes 26-36	FlexForm™, WellsForm™

Genesee BioMedical offers reusable sizing tools and handles to support precise valve repair across our annuloplasty portfolio. While most accessories are shared among FlexForm™, WellsForm™, and TruForm™, **TransForm™ utilizes its own sizers** to ensure accurate mitral remodeling.\*

Refer to individual product sections or Instructions for Use (IFU) for full cleaning and compatibility details.

All Genesee annuloplasty accessories featured in this section are fully **reusable** and designed for repeat sterilization

\* Accessories must be resterilized before each use. Refer to the product's Instructions for Use (IFU) for full warnings, precautions, and reprocessing instructions.  
CAUTION: Federal law (USA) restricts these devices to sale by, or on the order of, a physician.

# Contact

Shaped by Surgeons.  
Built for Better Outcomes.



Genesee BioMedical, Inc.  
700 W. Mississippi Avenue, Unit D5  
Denver, CO 80223-4509



Phone:  
303-777-3000



Website:  
[www.geneseebiomedical.com](http://www.geneseebiomedical.com)



General Inquiries:  
[info@geneseebiomedical.com](mailto:info@geneseebiomedical.com)

“Innovation begins with listening. Every great product we build starts with a surgeon’s challenge.”  
— Matt Dambeck, CEO Genesee BioMedical, Inc

